

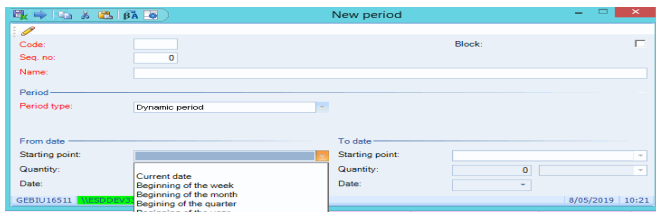


## Rimses 6.6. What's new in this version?

We are continuing to respond to what is happening in the Maintenance and Service world in the form of Rimses 6.6. Technical personnel are increasingly expected to report their completed work quickly and accurately. In all areas, we are continuing to focus on **user-friendliness**, for example for adding **dynamic fields**. A new feature has made it possible to save a great amount of time on the **bulk loading** of installations, materials and setup. For example, it is now possible to load actions from inspections in bulk.

### USER-FRIENDLINESS

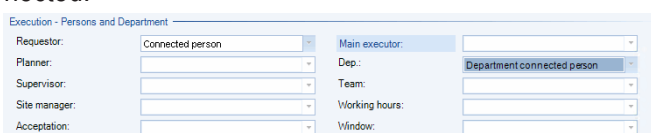
You can select a **dynamic period** when creating periods. This enables you to choose any (dynamic) period you like, which can be useful if you want to visualize work orders that have been executed 'almost' too late



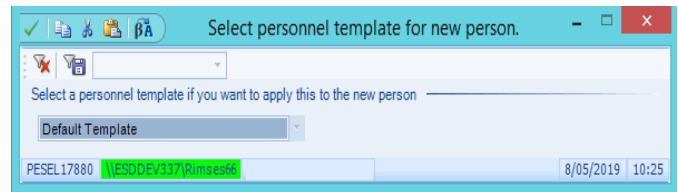
From now on the state of the 'List filter' button is **permanently** displayed or not. This means that the next time you open the selection window, this state is



In the selection windows you can make a dynamic selection based on the **connected person**, meaning that you will see different information depending on who is connected.



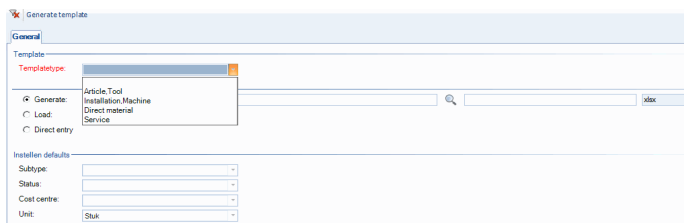
When adding **new persons**, you now have the option to automatically fill in standard information on the personnel record, as well as roles, departments, counters, etc. and (user) settings based on a personnel template selected by you.



From now on, you can easily create and manage a **checklist**. You can visualize the checklist and plan a route to reduce the running time.

Volgnr	Object	Objectnaam	Roepnaam	Code	Omschrijving	Subtype	Kostenplaats	Geografische locatie	Geografisch
20	65001	Machine 1 NL	Machine 1 NL - Roepnaam	CHB	2016 - Status1 - CHB - Checklist ta Toester	RIMS02 NL	GL2	GL2 NL	
30				CHB	2016 - Status1 - CHB - Checklist ta Toester	RIMS02 NL	GL2	GL2 NL	
40				CHB	2016 - Status1 - CHB - Checklist ta Toester	RIMS02 NL	GL2	GL2 NL	
50	65002	Machine 2 NL		CHB	2016 - Status1 - CHB - Checklist ta Toester	RIMS02 NL	GL11	GL11 NL	
60				CHB	2016 - Status1 - CHB - Checklist ta Toester	RIMS02 NL	GL11	GL11 NL	
70				CHB	2016 - Status1 - CHB - Checklist ta Toester	RIMS02 NL	GL11	GL11 NL	
80				CHB	2016 - Status1 - CHB - Checklist ta Toester	RIMS02 NL	GL11	GL11 NL	

Via an **Excel list** it is possible to load 'new' installations, materials and services in bulk in a simple, user-friendly manner.

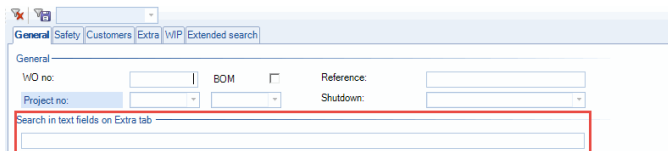


In the **setup**, it is also possible to connect materials by loading them in bulk.

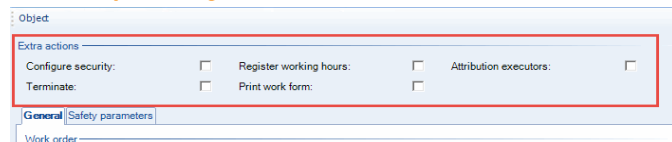
If you have a lot of **'follow-up actions'** after an inspection, and the inspector delivers these in an Excel file (for example), this data can be loaded in bulk instead of creating individual work requests. This results in significant time savings.

## WORK PROCESSING

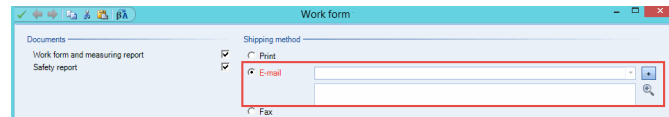
A **new selection field** has been created that will **search in multiple work order text fields** under the work order history.



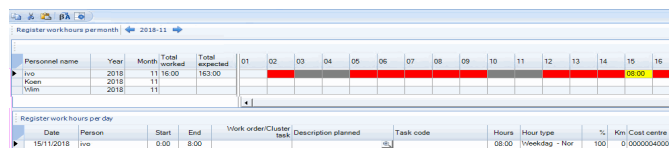
When creating a **TPM work order**, you can **record working hours**, **assign them to another worker**, **configure the level of security** and **log the TPM work order**.



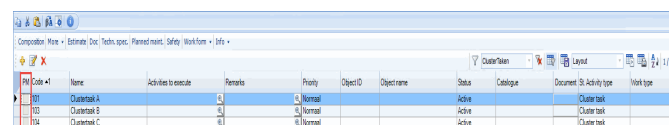
When mailing a work order, a choice can be made from a list of persons that are linked to an **email address in the personnel file**.



Via the **'hours worked per month'** list, you can now quickly and easily consult the hours worked by a person or department.

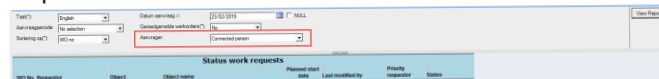


In the overview of standard activities, you can now quickly see whether **scheduled maintenance** is linked to a **work order** via an extra column.



## STARTUP WINDOW

A **new report** is available with an overview of your work requests or your department. You can easily link this report to your profile via the 'logged-in person' selection. Through this selection, anyone who logs in will see their own work requests.



## WANT TO FIND OUT MORE?

Go to [www.rimses.com](http://www.rimses.com) or contact us via [info@realdolmen.com](mailto:info@realdolmen.com).

## About RIMSES

Rimses is a flexible, convenient and above all very user-friendly system developed on the basis of best practices validated by our users. Rimses transforms maintenance data into valuable information to support your maintenance strategy. Its modular setup establishes the basis for each maintenance plan and allows it to anticipate the specific needs of each company or industry in a flexible way. Rimses is also a very complete package that includes stock and purchase management and is easy to integrate into other business systems. It is suitable for internal maintenance departments, but it also supports the specific needs of service companies.